



UEBT
SOURCING®
WITH RESPECT

REGENERATIVE PROGRAMME

CONTRIBUTING TO THE UEBT VISION
OF A WORLD IN WHICH ALL PEOPLE
AND BIODIVERSITY THRIVE



THE UEBT REGENERATIVE PROGRAMME

UEBT's regenerative programme engages companies that wish to promote regenerative practices and contribute to the UEBT vision of a world in which all people and biodiversity thrive.

Why regenerative?

Regenerative is about measuring the impact of cultivation and wild harvesting practices on regenerating nature, considering this impact in terms of local conditions, and then adjusting practices as needed to achieve regenerative production systems.

Since 2019, UEBT has been promoting Biodiversity Action Plans that include regenerative impact indicators to monitor progress toward biodiversity regeneration and restoration.

Due to this experience, companies had approached UEBT as a credible partner that could engage with them and co-develop their journey of promoting regenerative practices. UEBT decided to test the feasibility of developing an impact-based regenerative programme.

The programme was co-developed in 2021 with members and partners and subsequently pilot tested in several countries and supply chains in 2022 and 2023. The regenerative programme follows 18 months of pilot testing and improvements made based on early learning.

“UEBT OFFERS AN IMPACT-BASED APPROACH USING AN INTERNATIONALLY RECOGNIZED MULTI- STAKEHOLDER STANDARD BASED ON ETHICAL SOURCING PRINCIPLES AND FAO’S¹ DEFINITION OF REGENERATIVE PRACTICES

Simona D’Amico
Head of Biodiversity
and Impact, UEBT

Objectives

The UEBT regenerative programme aims to:

- drive scientifically-grounded positive impact on people and biodiversity
- engage companies to invest in positive actions
- contribute to the UEBT vision of a world in which all people and biodiversity thrive

HOW DOES UEBT DEFINE ‘REGENERATIVE’?

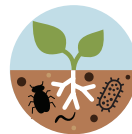
Regenerative practices¹ are ways in which cultivation and wild collection contribute to ecosystem services such as:



Carbon capture



Climate regulation



Soil restoration



Water purification



Maintaining biodiversity

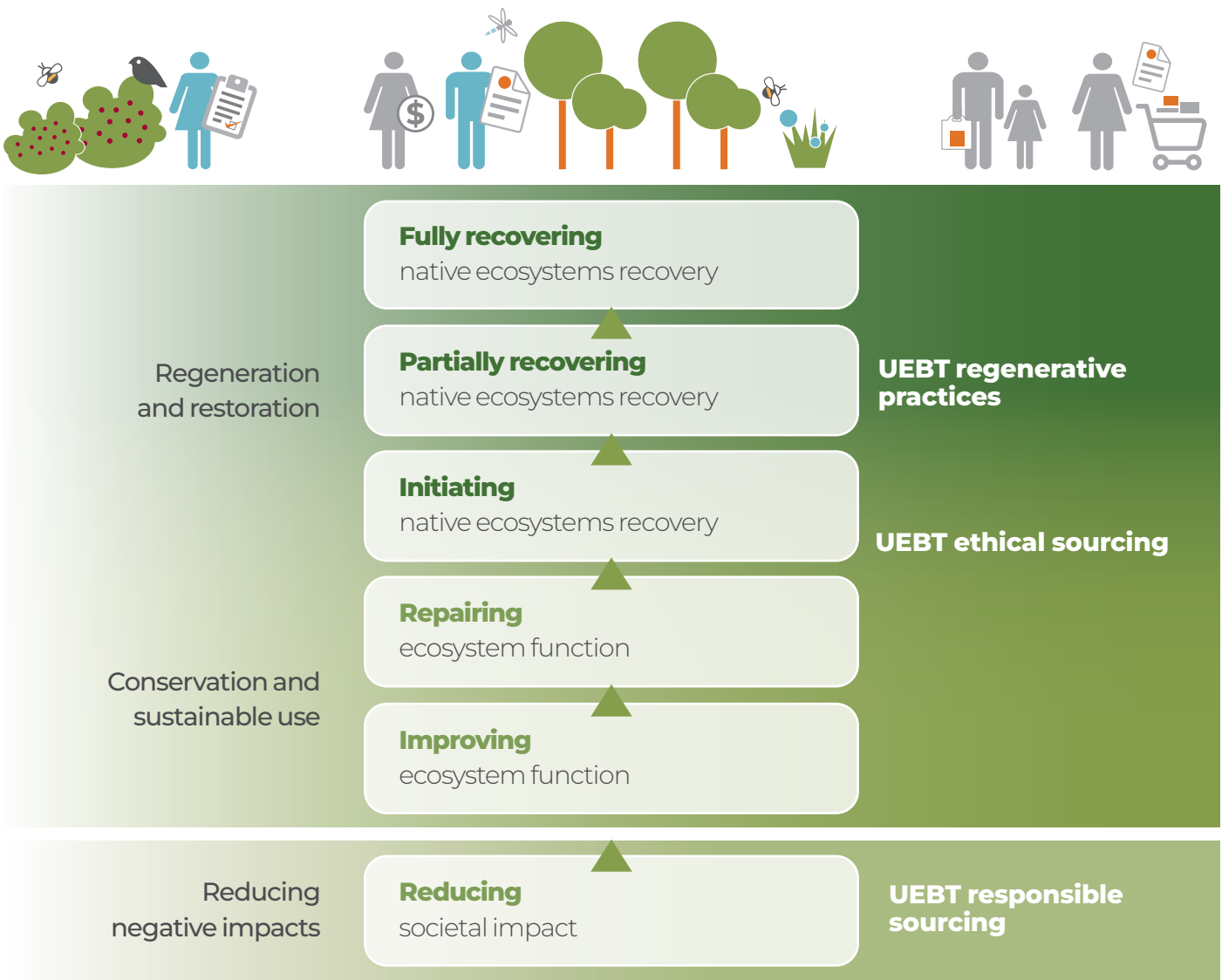


Providing livelihoods

¹Definition adapted from the Food and Agriculture Organization of the United Nations (FAO)

TOWARDS BIODIVERSITY CONSERVATION AND REGENERATION

The journey from mitigation to positive impact



Source: Adapted from the Restoration Continuum of the Society for Ecological Restoration (SER), one of UEBT's partners

What standard will be used

The UEBT regenerative programme is based on the UEBT standard that has a robust set of biodiversity requirements as well as human rights and social requirements. This is complemented by a regenerative module add-on. This add-on consists of regenerative impact indicators that are set as part of a Biodiversity Action Plan and for which the impact is assessed.

The add-on also contains a strong commitment to the indicator in the UEBT standard on living income for local producers. UEBT intends to ensure the programme is impact oriented.

Companies set targets per each of the regenerative impact indicators considering the specificities of the ecosystems where farming and wild collection is embedded, as well as the type of farming and collection practices in place.

In farming, target setting is guided by the principles of agroecology and targets should aim at promoting a balanced farming system of diverse crops, natural infrastructures, functional biodiversity, restored soil, pure water, and no use of synthetic agrochemicals.

In wild collection, target setting is guided by the principles of ecology and targets should aim at ensuring good regeneration of wild collected species, species diversity in natural habitats, support for the surrounding ecosystem, and more.

What UEBT can offer

- An impact-based approach using an internationally recognized multistakeholder standard based on UN ethical biotrade principles and FAO's definition of regenerative practices.
- A growing network of experts that can assess regenerative practices and indicators in different contexts and production systems.
- A growing number of tools and guidance documents developed through pilots on how to measure indicators and assess regenerative practices over time.
- Tailored support for testing and implementation of science-backed regenerative approaches in supply chains.
- Independent validation of regenerative practices, with a consumer claim or label, if desired.

Globally aligned

The UEBT regenerative programme aligns with a wide variety of frameworks at global or regional levels. These include the **UN Decade on Ecosystem Restoration** that aims to prevent, halt and reverse the degradation of ecosystems on every continent and in every ocean. These also include targets in the **Kunming-Montreal Global Biodiversity Framework** that call for agroecology, biodiversity friendly practices, and climate resilience.

Regenerative practices in the UEBT regenerative programme also align with the potential new EU Nature Restoration Law, among other rising regulations or initiatives that focus on aspects of conserving and restoring biodiversity and maintaining nature's contributions to people.

REGENERATIVE INDICATORS IN DETAIL

■ Conservation and enhancement of biodiversity

- Habitat richness
- Habitat proportion
- Species per hectare
- Invasive species clearance

■ Resilient crops and collected species

- Crops per hectare
- Varieties per crop
- Landrace or adapted varieties per crop
- Wild collected plants regeneration rate

■ Soil health

- Organic carbon contents
- Water infiltration

■ Water conservation

- Water use efficiency
- Water quality

■ Use of agrochemicals

- Synthetic agrochemicals application rate
- Total nitrogen applied

■ Energy use optimisation and GHG emissions reduction

- Energy use processing
- Kilogrammes of CO₂ emitted

■ Waste management

- Percentage of waste with appropriate management over total waste

■ Living wage and living income

- Analysis of contribution to living income for producers/collectors
- Analysis of living wage payment for employed workers



TARGET SETTING PROCESS FOR REGENERATIVE

1



Baseline assessment

The wild collection or cultivation practices are assessed by an expert together with the values of each of the regenerative impact indicators.

The regenerative expert

This can be chosen by UEBT, or chosen by the organisation interested in implementing regenerative practices and then approved by UEBT.

Profile Experts working on regenerative cultivation practices

- Background in agronomic science,
- Experience in agroecology, or biodynamic farming, and similar,
- Knowledge of the context and of the species that will be included in the assessment and concerned by the regenerative practices,
- Trained by the UEBT biodiversity team on the UEBT regenerative programmes and BAP approach.

Profile Experts working on regenerative wild collection practices

- Background in ecology or botany,
- Experience in conducting assessments to determine the status of species and ecosystems,
- Knowledge of the context and of the species that will be included in the assessment and concerned by the regenerative practices,
- Trained by the UEBT biodiversity team on the UEBT regenerative programmes and BAP approach.

2



Target setting

The expert evaluates if the current practices and values of the indicators corresponds to a regenerative system, and if they do not, the expert will propose targets to reach and actions to put in place to reach those targets.

Examples of questions the expert will respond to determine its recommendations

Cultivation

- Is there sufficient beneficial biodiversity to balance the farming system without the use of synthetic agrochemicals?
- Is the resilience of crops ensured?
- Are conditions of soil, water, and other natural resources well conserved?
- Is the use of natural resources, pollution, contamination minimised?

Wild collection

- Is the regeneration of the wild collected species ensured?
- Are key stone species in the ecosystem where the wild collected species grow and its natural conditions conserved?

3



Workplan definition

The organisation interested in implementing regenerative practices defines a workplan to implement the actions suggested. A 5-year workplan is usually suggested.

4



Monitoring

The organisation interested in implementing regenerative practices or the expert monitor the implementation of the actions and the achievement of targets.

5



Verification and certification Optional

An independent auditor verifies the implementation of the actions and the achievement of targets. The organisation interested in implementing regenerative practices may make on- or off-product or text claims. Both the progress on actions (performance progress) and on targets (impact progress) are considered. Different levels can be reached, depending on the year of assessment.

**“ WE MUST REPLACE
CURRENT ‘BUSINESS AS
USUAL’ LINEAR MODELS,
WHICH ARE BASED
ON EXTRACTION AND
PRODUCTION, AND
WERE DESIGNED WITH
A DISPOSAL MINDSET.
INSTEAD, WE NEED
TO MOVE TO SYSTEMIC
CIRCULAR AND
REGENERATIVE
MODELS THAT ARE IN
SERVICE OF LIFE**

Roberta Roesler

Circularity and Regeneration
Director, Natura & Co

Costs

Costs for regenerative plans depend on the type of actions to be implemented and the initial gap with regenerative targets/ actions. The farther from a regenerative system the starting point is, the higher the costs of the action plan are. Baseline assessment and target definition cost range can be provided. Using UEBT experts, this ranges from 9,000 to 20,000 EUR depending on the extent of the areas to be assessed and the expert's rate. If carbon and emissions indicators will be calculated, costs may be higher because specialised companies will need to also be involved.

Monitoring costs are additional and these range from 5,000 to 10,000 EUR depending on the same factors as above. Monitoring is repeated every year or every two years. Monitoring of carbon is separate, often done by external (non-UEBT) experts, and not included in these costs.

Who can engage and how

UEBT members can engage – from brands, to processing companies, to farmers and wild collectors, as well as external organisations at different stages of the supply chains or working with promoting regenerative practices in the sourcing of botanicals (e.g. International organisations, NGOs, etc).

Organisations can contact us at impact@uebt.org to learn more about the UEBT regenerative programme and to discuss with us whether regenerative practices might be possible for their ingredients being sourced.

As regenerative practices are promoted, externally validated claims may also be possible.



UEBT

De Ruijterkade 6, 1013 AA, Amsterdam, The Netherlands | Telephone: +31 20 22 34567 | Email: info@uebt.org

Representation in Brazil | France | India | Madagascar | Vietnam

Connect with us www.uebt.org | www.linkedin.com/company/uebt

Published September 2023